

ROOF LAYOUT
SCALE 1:150

NOTES

This drawing is to be read in conjunction with other relevant drawings

All dimensions are in millimetres unless otherwise stated

Contractor to check drawings for errors, omissions and ambiguities and report to the Architect

Do not scale from drawing take figured dimensions in preference to scaling

Do not duplicate, copy or alter drawings without the consent of the architect - copyright reserved 2015.

No	REVISION	DATE

5

DRAWING HEADING:
WORKING DRAWINGS

CLIENT:
CATHOLIC BOARD

CONTRACTOR:
WALTECH ENTERPRIZE

JOB TITLE:
CHAPEL BUILDING FOR SECONDARY SCHOOL & BOARDING FACILITY IN NJOLWE, LUSAKA ZAMBIA

DRAWING TITLE:
ROOF LAYOUT

SCALE: **AS INDICATED**

DATE: **FEB 2022**

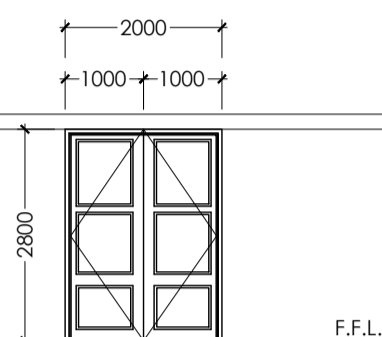
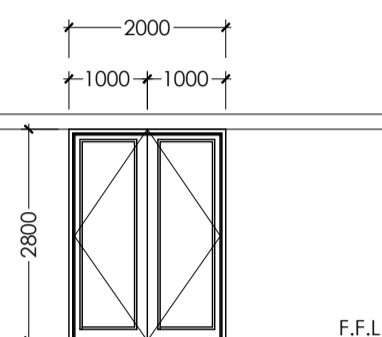
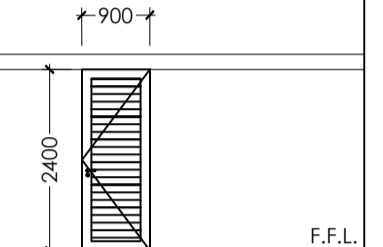
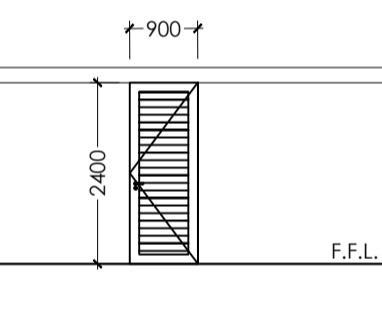
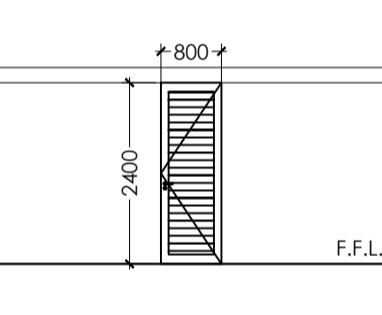
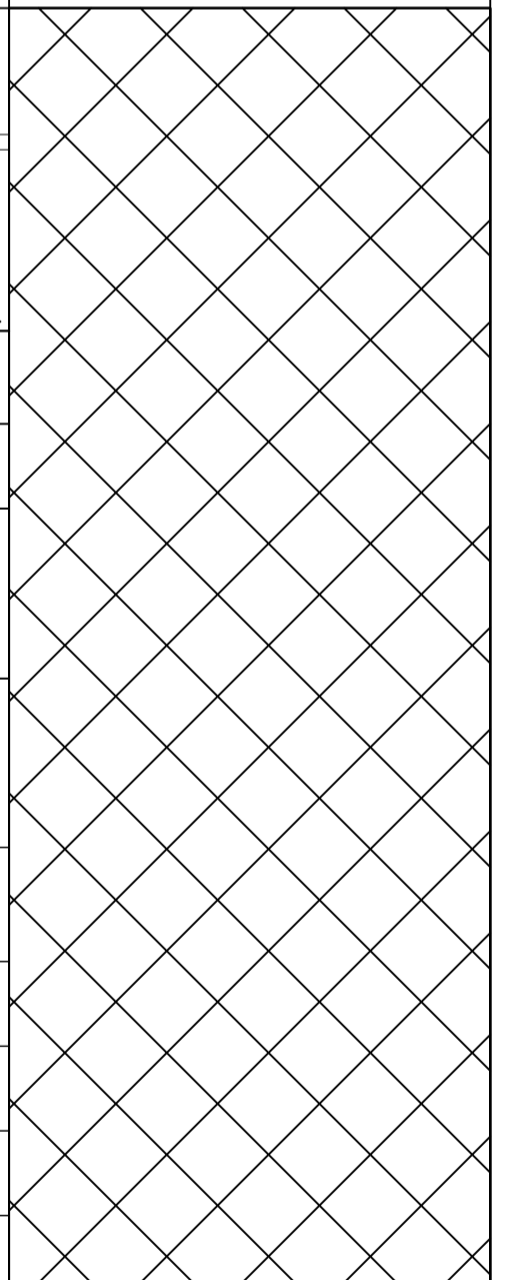
DRAWN: **MOSES KALUBA**

CHECKED: **SOAR ARCHITECTS**

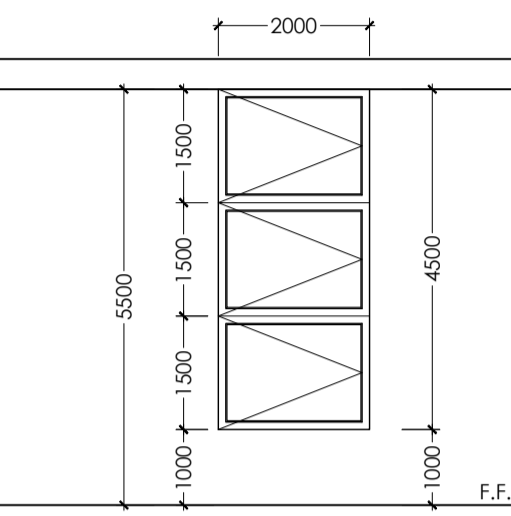
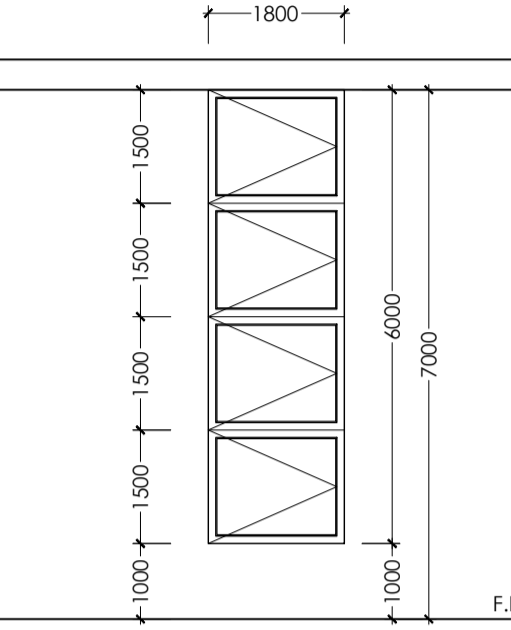
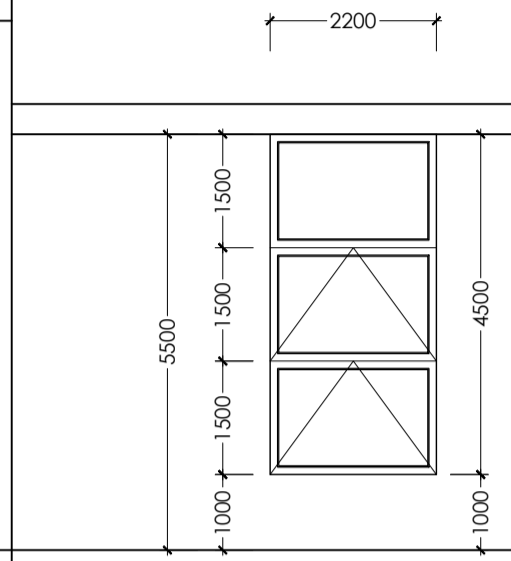
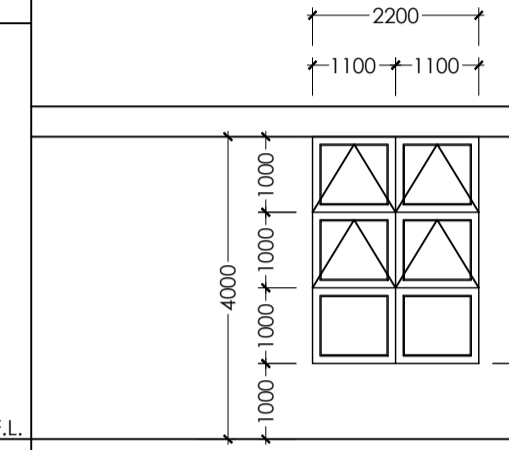
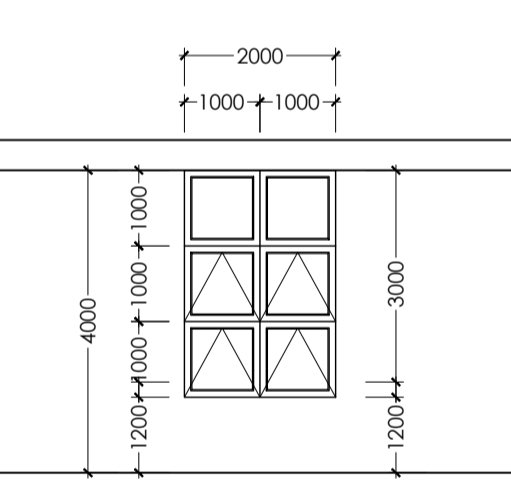
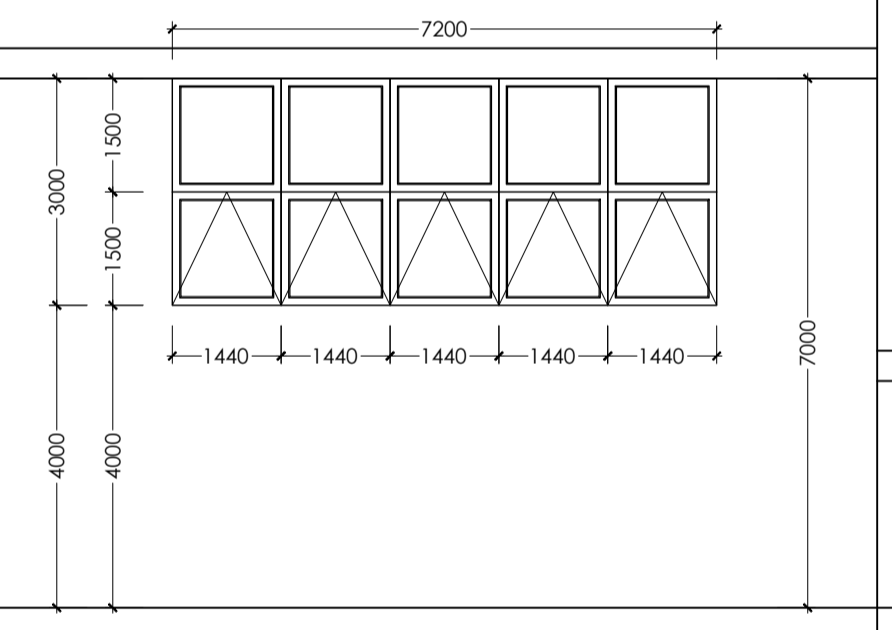
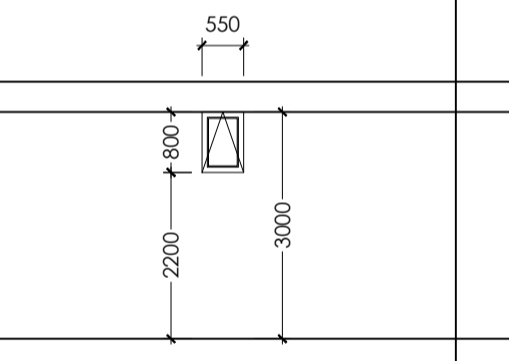
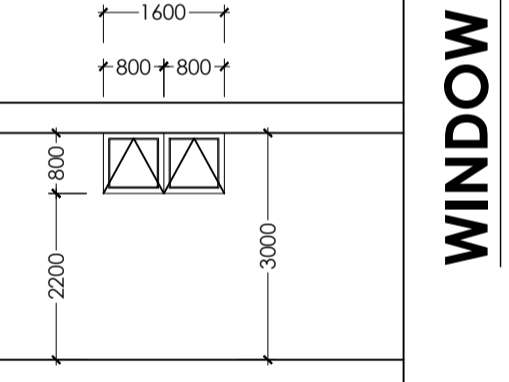
PROJECT #: **SE-08/15-005**

DRAWING #: **SE-08/15-005/P03**

SOAR ARCHITECTS

DOOR TYPE			
DOOR No	D1	D2	D3
LOCATION	AS INDICATED ON DRAWING	AS INDICATED ON DRAWING	AS INDICATED ON DRAWING
SPECIFICATIONS	SOLID paneled MUKWA DOOR TO MANUFACTURERS SPECIFICATIONS WITH (1) STAINLESS STEEL HINGES AND 5 LEVER YALE LOCKSET	SOLID paneled MUKWA DOOR TO MANUFACTURERS SPECIFICATIONS WITH (1) STAINLESS STEEL HINGES AND 5 LEVER YALE LOCKSET	SOLID paneled MUKWA DOOR TO MANUFACTURERS SPECIFICATIONS WITH (1) STAINLESS STEEL HINGES AND 5 LEVER YALE LOCKSET
DOOR FRAME	MUKWA TREATED HARDWOOD FRAME	MUKWA TREATED HARDWOOD FRAME	MUKWA TREATED HARDWOOD FRAME
PROFILE	2.0M	2.0M	2.0M
HAND	LH RH	LH RH	LH RH
TOTAL No RQD	3	5	11
DOOR TYPE			
DOOR No	D4	D5	
LOCATION	AS INDICATED ON DRAWING	AS INDICATED ON DRAWING	
SPECIFICATIONS	SOLID paneled SLIDING MUKWA DOOR TO MANUFACTURERS SPECIFICATIONS WITH (3) STAINLESS STEEL HINGES AND 5 LEVER YALE LOCKSET	SOLID paneled SLIDING MUKWA DOOR TO MANUFACTURERS SPECIFICATIONS WITH (3) STAINLESS STEEL HINGES AND 5 LEVER YALE LOCKSET	
DOOR FRAME	MUKWA TREATED HARDWOOD FRAME	MUKWA TREATED HARDWOOD FRAME	
PROFILE	2.0M	2.0M	
HAND	LH RH	LH RH	
TOTAL No RQD	3	1	

DOOR SCHEDULE - SCALE 1:100

WINDOW TYPE				
WINDOW No	W1	W2	W3	W4
LOCATION	AS INDICATED ON DRAWING	AS INDICATED ON DRAWING	AS INDICATED ON DRAWING	AS INDICATED ON DRAWING
FRAME	ANODISED ALUMINIUM FRAME	ANODISED ALUMINIUM FRAME	ANODISED ALUMINIUM FRAME	ANODISED ALUMINIUM FRAME
DESCRIPTION	ALUMINIUM WINDOW WITH SWING OPENABLE PANELS COMPLETE WITH 6.38mm CLEAR GLASS COMPLETE WITH 16mm ROUND	ALUMINIUM WINDOW WITH SWING OPENABLE PANELS COMPLETE WITH 6.38mm CLEAR GLASS COMPLETE WITH 16mm ROUND	ALUMINIUM WINDOW WITH TOP HANG PANELS COMPLETE WITH 6.38mm CLEAR GLASS COMPLETE WITH 16mm ROUND	ALUMINIUM WINDOW WITH TOP HANG PANELS COMPLETE WITH 6.38mm CLEAR GLASS COMPLETE WITH 16mm ROUND
GLAZING	6.38mm LAMINATED CLEAR GLASS	6.38mm LAMINATED CLEAR GLASS	6.38mm LAMINATED CLEAR GLASS	6.38mm LAMINATED CLEAR GLASS
TOTAL No RQD	4	26	2	4
WINDOW TYPE				
WINDOW No	W5	W6	W7	W8
LOCATION	AS INDICATED ON DRAWING	AS INDICATED ON DRAWING	AS INDICATED ON DRAWING	AS INDICATED ON DRAWING
FRAME	ANODISED ALUMINIUM FRAME	ANODISED ALUMINIUM FRAME	ANODISED ALUMINIUM FRAME	ANODISED ALUMINIUM FRAME
DESCRIPTION	ALUMINIUM TOP HANG PANELS COMPLETE WITH 6.38mm CLEAR GLASS COMPLETE WITH 16mm ROUND	ALUMINIUM TOP HANG PANELS COMPLETE WITH 6.38mm CLEAR GLASS COMPLETE WITH 16mm ROUND	TOP HANG ALUMINIUM WINDOWS PANELS COMPLETE WITH 6.38mm CLEAR GLASS COMPLETE WITH 16mm ROUND	TOP HANG ALUMINIUM WINDOWS PANELS COMPLETE WITH 6.38mm CLEAR GLASS COMPLETE WITH 16mm ROUND
GLAZING	6.38mm LAMINATED CLEAR GLASS	6.38mm LAMINATED CLEAR GLASS	6.38mm OBSCURED GLASS	6.38mm OBSCURED GLASS
TOTAL No RQD	2	1	13	1

WINDOW SCHEDULE - SCALE 1:100

NOTES

This drawing is to be read in conjunction with other relevant drawings

All dimensions are in millimetres unless otherwise stated

Contractor to check drawings for errors, omissions and ambiguities and report to the Architect

Do not scale from drawing take figured dimensions in preference to scaling

Do not duplicate, copy or alter drawings without the consent of the architect - copyright reserved 2015.

No	REVISION	DATE

4

DRAWING HEADING:
WORKING DRAWINGS

CLIENT:
CATHOLIC BOARD

CONTRACTOR:
WALTECH ENTERPRIZE

JOB TITLE:
CHAPEL BUILDING FOR SECONDARY SCHOOL & BOARDING FACILITY IN NJOLWE, LUSAKA ZAMBIA

DRAWING TITLE:
DOOR + WINDOW SCHEDULES

SCALE: **AS INDICATED**

DATE: **FEB 2022**

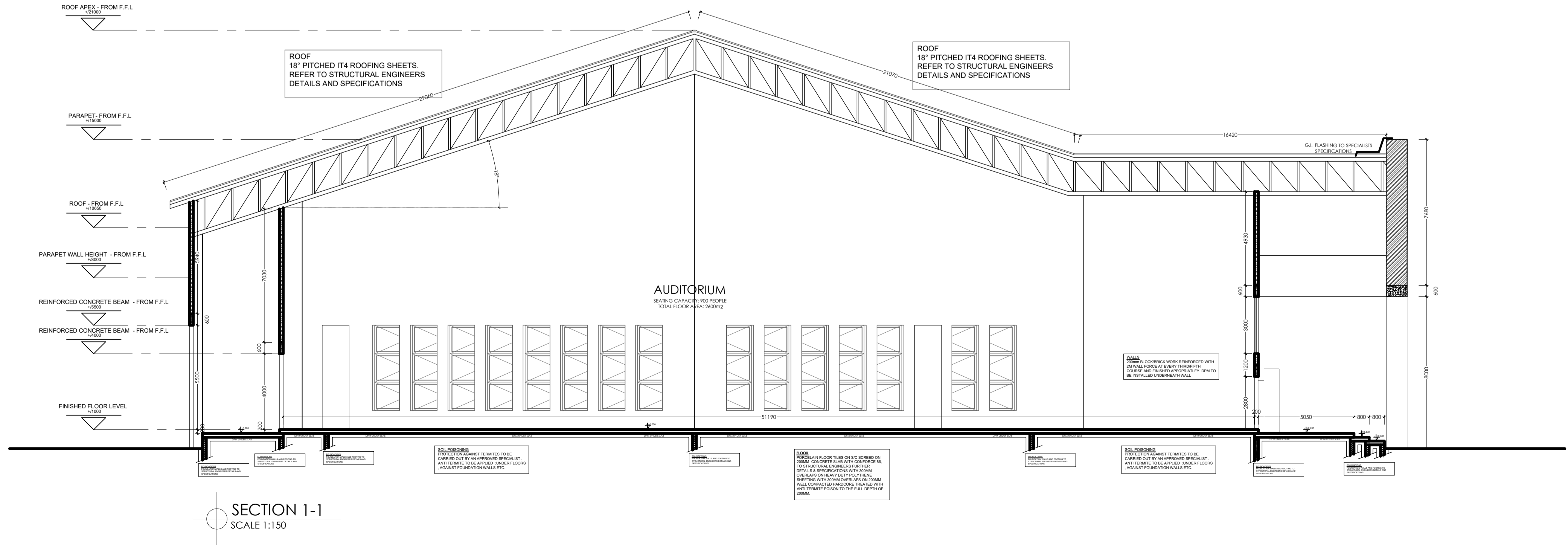
DRAWN: **MOSES KALUBA**

CHECKED: **SOAR ARCHITECTS**

PROJECT #: **SE-08/15-005**

DRAWING #: **SE-08/15-005/P03**

SOAR ARCHITECTS



NOTES

This drawing is to be read in conjunction with other relevant drawings

All dimensions are in millimetres unless otherwise stated

Contractor to check drawings for errors, omissions and ambiguities and report to the Architect

Do not scale from drawing take figured dimensions in preference to scaling

Do not duplicate, copy or alter drawings without the consent of the architect - copyright reserved 2015.

No	REVISION	DATE

3

DRAWING HEADING:
WORKING DRAWINGS

CLIENT:
CATHOLIC BOARD

CONTRACTOR:
WALTECH ENTERPRIZE

JOB TITLE:
CHAPEL BUILDING FOR SECONDARY SCHOOL & BOARDING FACILITY IN NJOLWE, LUSAKA ZAMBIA

DRAWING TITLE:
**RIGHT SIDE ELEVATION
LEFT SIDE ELEVATION
SECTION 1-1**

SCALE: **AS INDICATED**

DATE: **MAY 2022**

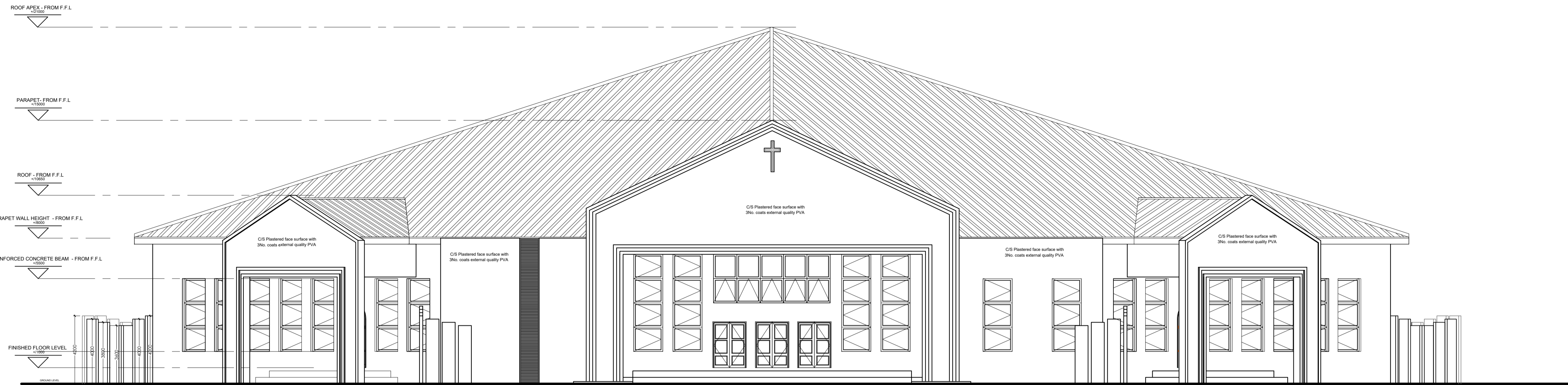
DRAWN: **MOSES KALUBA**

CHECKED: **SOAR ARCHITECTS**

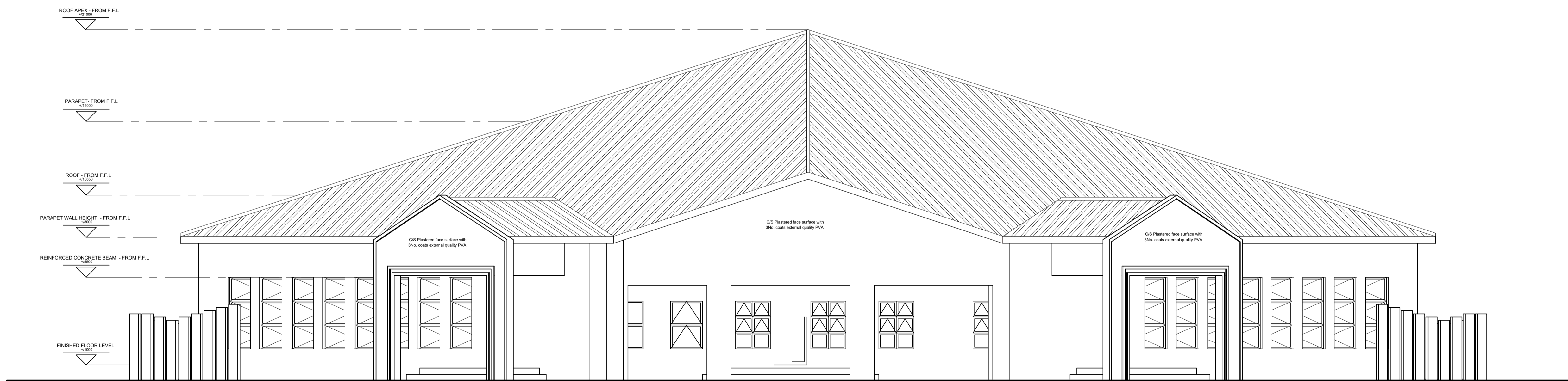
PROJECT #: **SE-08/15-005**

DRAWING #: **SE-08/15-005/P03**

SOAR ARCHITECTS



FRONT ELEVATION
SCALE 1:150



REAR ELEVATION
SCALE 1:150

NOTES

This drawing is to be read in conjunction with other relevant drawings

All dimensions are in millimetres unless otherwise stated

Contractor to check drawings for errors, omissions and ambiguities and report to the Architect

Do not scale from drawing take figured dimensions in preference to scaling

Do not duplicate, copy or alter drawings without the consent of the architect - copyright reserved 2015.

No	REVISION	DATE

2

DRAWING HEADING:
WORKING DRAWINGS

CLIENT:
CATHOLIC BOARD

CONTRACTOR:
WALTECH ENTERPRIZE

JOB TITLE:
CHAPEL BUILDING FOR SECONDARY SCHOOL & BOARDING FACILITY IN NJOLWE, LUSAKA ZAMBIA

DRAWING TITLE:
**FRONT ELEVATION
REAR ELEVATION**

SCALE: **AS INDICATED**

DATE: **FEB 2022**

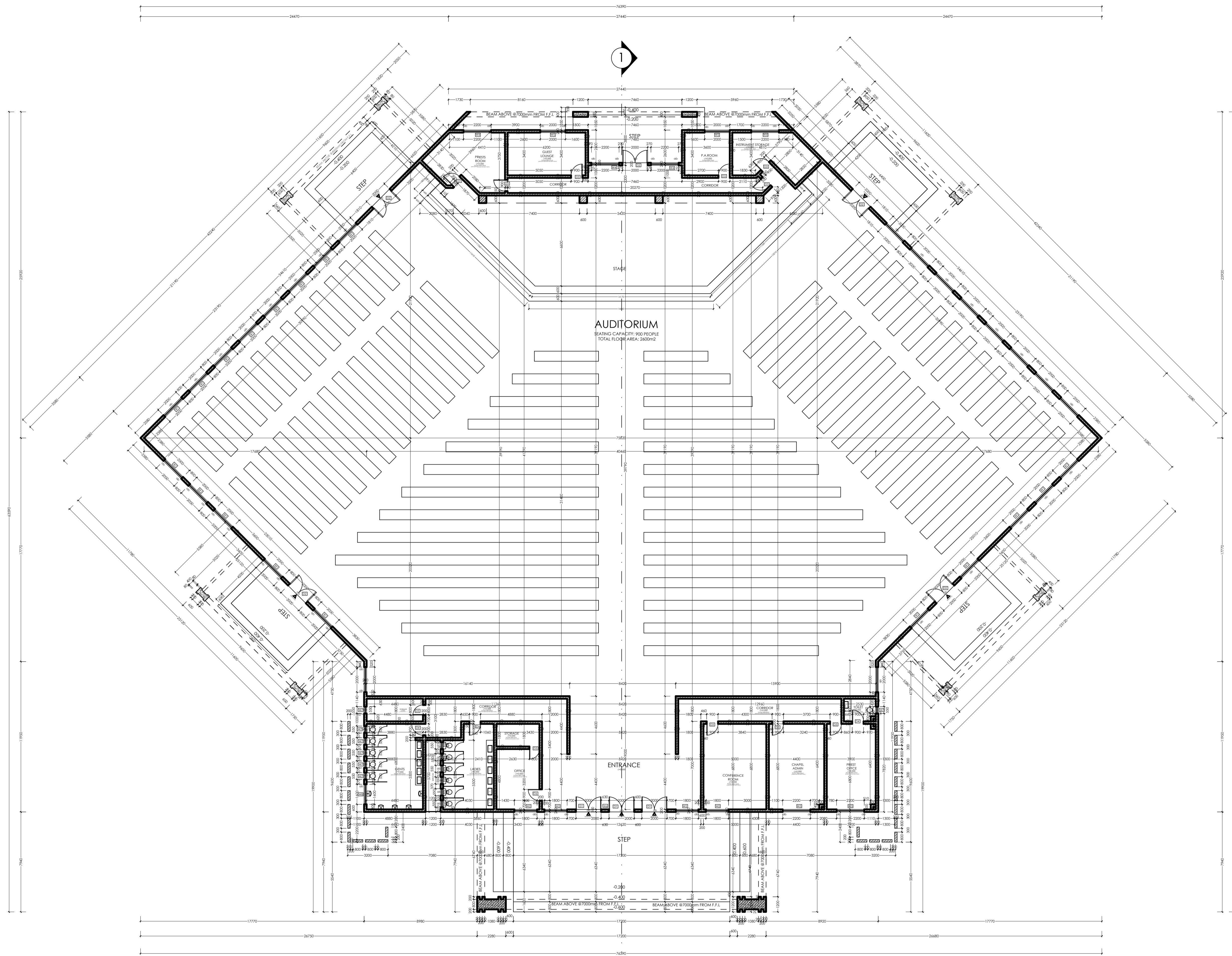
DRAWN: **MOSES KALUBA**

CHECKED: **SOAR ARCHITECTS**

PROJECT #: **SE-08/15-005**

DRAWING #: **SE-08/15-005/P03**

SOAR ARCHITECTS



FLOOR PLAN
 SEATING CAPACITY: 900 PEOPLE
 TOTAL FLOOR AREA: 2600m²
 SCALE: 1:150

NOTES

This drawing is to be read in conjunction with other relevant drawings

All dimensions are in millimetres unless otherwise stated

Contractor to check drawings for errors, omissions and ambiguities and report to the Architect

Do not scale from drawing take figured dimensions in preference to scaling

Do not duplicate, copy or alter drawings without the consent of the architect - copyright reserved 2015.

No	REVISION	DATE
----	----------	------

1
 DRAWING HEADING:
WORKING DRAWINGS

CLIENT:
CATHOLIC BOARD

CONTRACTOR:
WALTECH ENTERPRIZE

JOB TITLE:
CHAPEL BUILDING FOR SECONDARY SCHOOL & BOARDING FACILITY IN NJOLWE, LUSAKA ZAMBIA

DRAWING TITLE:
• FLOOR PLAN

SCALE:	AS INDICATED
DATE:	MAY 2022
DRAWN:	MOSES KALUBA
CHECKED:	MOSES KALUBA
PROJECT #:	SE-08/15-005
DRAWING #:	SE-08/15-005/P03

SOAR ARCHITECTS